

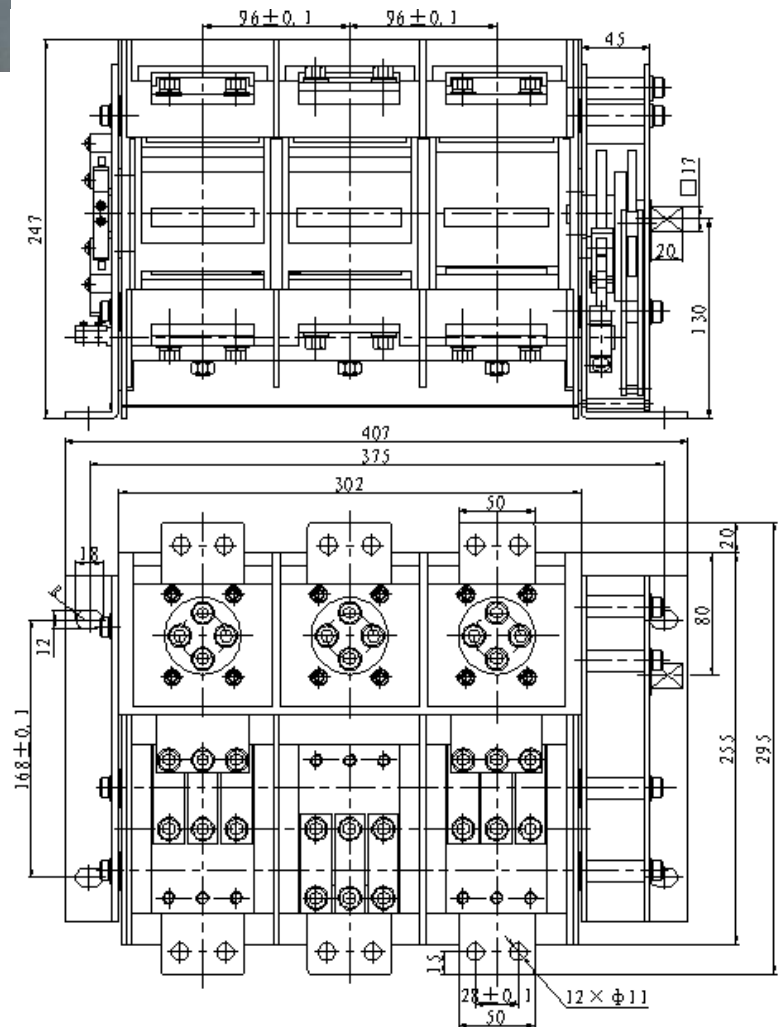
## Outline drawing



1. They have obvious isolating fracture with air and vacuum breaking capacity, small contact stroke, short arcing time, high breaking capacity.
2. Air and vacuum fractures in series improved reliability, open vacuum fracture first, and able to connect the test position, the main circuit vacuum isolating, secondary charged, easy to use, safe and reliable.
3. Vacuum fracture's spindle rotates  $\pm 90^\circ$  open first and then close; air fracture's spindle rotates  $\pm 45^\circ$ , close first and then open.

## GHK-800/3.6 Isolating Switches

Technical parameters		
Rated voltage	kV	3.6
Rated current	A	800
Rated short circuit breaking current	kA	6.3
Rated short time withstanding current (2S)	kA	8
Rated peak withstanding current	kA	20
Rated short time withstand voltage	kV	25
Rated BIL withstand voltage	kV	40
Rated short time withstand voltage(fracture)	kV	27
Rated BIL withstand voltage(fracture)	kV	46
Auxiliary contact	3 NO, 3NC	
Auxiliary contact capacity	Ue:AC380V DC220V Ie:5A	



Features of loading isolating switches: