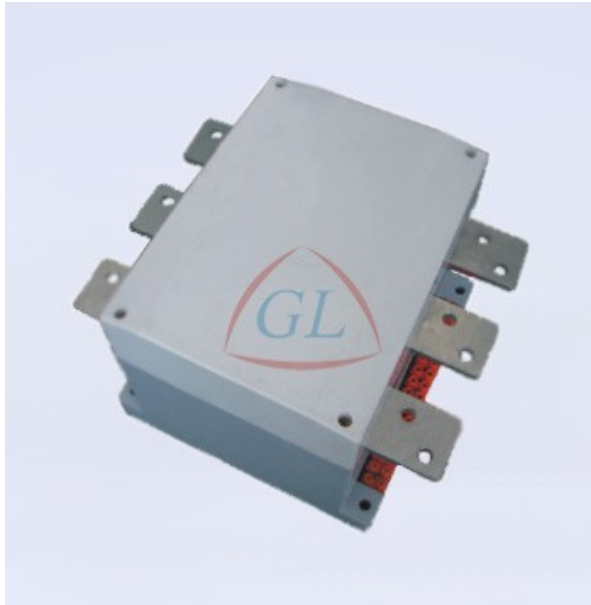


Product outline drawing



CKJ11-800/1.5 AC vacuum contactor

Parameter		
Rated Current	A	800
Rated Voltage	kV	1.5
Rated Turn-on Capacity	A/50 times	8000
Rated Disjunction Capacity	A/50 times	6400
High-point Disjunction Capacity	A/3 times	8000
Contact Gap	mm	2 ± 0.2
Over Travel	mm	1 ± 0.2
Mechanical Life	times	106
Electrical Life	times	6 × 10 ⁴
Reference Weight	kg	
Controlled Power Voltage	V	110、220 Or to make the products as customer's requirement

